

QuickRail™

1.800.294.1098

Synthetic Railing System



KEY FEATURES:

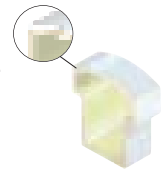
- **Limited Lifetime Warranty**
- **Quick Installation**
- **UV Protected**
- **Impact Resistant**
- **Virtually Maintenance Free**
- **Listed with ICC - Report #22-22**
- **Vibrant White or Desert Tan Color**
- **Never Needs Painting**
- **Tri-Layered Composite Technology**

The unique combination of materials and system design makes QuickRail™ one of the most technologically advanced rail systems on the market. QuickRail™ is virtually maintenance free! QuickRail™'s unique Tri-Layered Composite formula gives you qualities no other railing system can offer. It provides thicker walls, greater stiffness and

rigidity with less weight, and is ideal for harsh outdoor weather conditions. It will not decay, warp, fade, chip, splinter or rust. Like all our products, QuickRail™ is built to a higher standard...our own. It reflects the Pacific Columns vision of quality, ease of installation and value that we expect as consumers ourselves.

Tri-Layered Composite Technology

QuickRail™ utilizes Tri-Layered Composite Technology – a unique, patented manufacturing process that provides greater strength than standard PVC railing systems – yet is lighter in weight. Additionally, it is more resilient and withstands greater impact than standard PVC products. It provides thicker walls with less weight.



Quick Installation

QuickRail™ is designed for easy installation. The only tools needed are a tape measure, hacksaw, drill or screwdriver and level.

All Components in One Box

QuickRail™ Kits are packaged with all components in a single box. Each kit box includes the top rail, bottom rail, spindles, crush block, brackets, and coated screws.

No Painting Required

QuickRail™ comes in two colors: Vibrant White and Desert Tan and it never needs to be painted. A special ingredient, Titanium Dioxide, protects QuickRail™ from UV rays and ensures color retention.

QuickRail™

1.800.294.1098

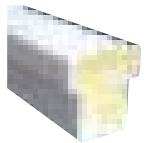
Synthetic Railing System

Easy Planning Steps

All Kits Include: Top Rail, Bottom Rail, Spindles, Crush Block, Brackets and Screws. Posts and other accessories sold separately.

QuickRail™ Kits and Accessories are designed to fit together beautifully and easily creating a complete railing system. Follow these Easy Planning Steps to determine which QuickRail™ Kits and Accessories you will need to complete your project. Whether your project is large or small, you will immediately enjoy the benefits of this beautiful and virtually maintenance free system.

STEP 1: Choose a Color



Vibrant White

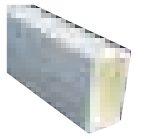


Desert Tan

STEP 2: Choose a Top Rail Style



Deluxe Top Rail



Flat Top Rail



Colonial Spindle



Square Spindle

STEP 3: Choose a Spindle Style

STEP 4: Choose a Bracket Type

Choose appropriate bracket required for your application



Deluxe Straight Bracket
(Use with Deluxe Top Rail)



Flat Straight Bracket
(Use with Flat Top Rail or Bottom Rail)



Deluxe Curved Bracket
(Use with Deluxe Top Rail)



Flat Curved Bracket
(Use with Flat Top Rail or Bottom Rail)

For Flat Surface Applications

For Round Column Applications



Reversible Flat Sloped Bracket



Deluxe Sloped Upper Step Bracket



Deluxe Sloped Lower Step Bracket

For Stair Applications

STEP 5: Choose Rail Height & Length(s)

Two Rail Heights are available: 36" and 42".

Four Rail Lengths are available: 6', 8', 10' and 12'.

Three Stair Rail Lengths are available: 6', 8' and 10'.

STEP 6: Determine Type & Number of Kits Needed

Based on the styles and height you've chosen, calculate how many kits you will need to complete your project.

QuickRail™ Straight Kits

| Product (Deluxe or Flat Hand Rail) | Hand Rail Height | Spindle Style | # Spindles | Bracket Style | Actual Rail Length |
|------------------------------------|------------------|---------------|------------|---------------|--------------------|
| 6' Rail Kit | 36" | Colonial | 14 | Straight | 70 1/2" |
| 6' Rail Kit | 36" | Square | 13 | Straight | 72" |
| 6' Rail Kit | 36" | Colonial | 14 | Curved | 70 1/2" |
| 6' Rail Kit | 36" | Square | 13 | Curved | 72" |
| 6' Rail Kit | 42" | Square | 13 | Straight | 72" |
| 6' Rail Kit | 42" | Square | 13 | Curved | 72" |
| 8' Rail Kit | 36" | Colonial | 19 | Straight | 94 1/8" |
| 8' Rail Kit | 36" | Square | 17 | Straight | 96" |
| 8' Rail Kit | 36" | Colonial | 19 | Curved | 94 1/8" |
| 8' Rail Kit | 36" | Square | 17 | Curved | 96" |
| 8' Rail Kit | 42" | Square | 17 | Straight | 96" |
| 8' Rail Kit | 42" | Square | 17 | Curved | 96" |
| 10' Rail Kit | 36" | Colonial | 24 | Straight | 117 3/4" |
| 10' Rail Kit | 36" | Square | 22 | Straight | 120" |
| 10' Rail Kit | 36" | Colonial | 24 | Curved | 117 3/4" |
| 10' Rail Kit | 36" | Square | 22 | Curved | 120" |
| 10' Rail Kit | 42" | Square | 22 | Straight | 120" |
| 10' Rail Kit | 42" | Square | 22 | Curved | 120" |
| 12' Rail Kit | 36" | Colonial | 29 | Straight | 141" |
| 12' Rail Kit | 36" | Square | 26 | Straight | 144" |
| 12' Rail Kit | 36" | Colonial | 29 | Curved | 141" |
| 12' Rail Kit | 36" | Square | 26 | Curved | 144" |
| 12' Rail Kit | 42" | Square | 26 | Straight | 144" |
| 12' Rail Kit | 42" | Square | 26 | Curved | 144" |

Note: Square Spindles are spaced 4" apart.
Colonial Spindles are spaced 3 1/8" apart.

QuickRail™ Stair Kits

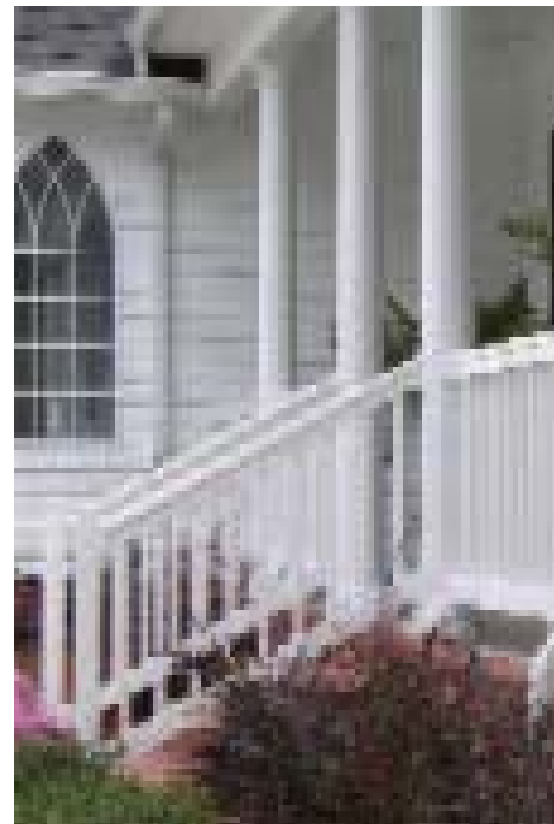
(accommodates 30° -34° angle of slope)

| Product (Deluxe or Flat Hand Rail) | Hand Rail | Spindle Style | # Spindles | Bracket Style | Actual Rail Length |
|------------------------------------|-----------|---------------|------------|---------------|--------------------|
| 6' Rail Kit | 36" | Colonial | 11 | Sloped | 78" |
| 6' Rail Kit | 36" | Square | 11 | Sloped | 78" |
| 6' Rail Kit | 42" | Square | 11 | Sloped | 78" |
| 8' Rail Kit | 36" | Colonial | 15 | Sloped | 102" |
| 8' Rail Kit | 36" | Square | 15 | Sloped | 102" |
| 8' Rail Kit | 42" | Square | 15 | Sloped | 102" |
| 10' Rail Kit | 36" | Colonial | 19 | Sloped | 126" |
| 10' Rail Kit | 36" | Square | 19 | Sloped | 126" |
| 10' Rail Kit | 42" | Square | 19 | Sloped | 126" |

Note: Colonial & Square Spindles are spaced 3 1/8" apart.

Note: 10' and 12' QuickRail™ Rail Kits should NOT be attached directly to the 4" Complete Post Kit or Post Sleeves. 10' and 12' Rail Kits should ONLY be attached directly to the supporting construction (i.e. support column or wall).

Note: Always check with building code requirements in your area before beginning any project.





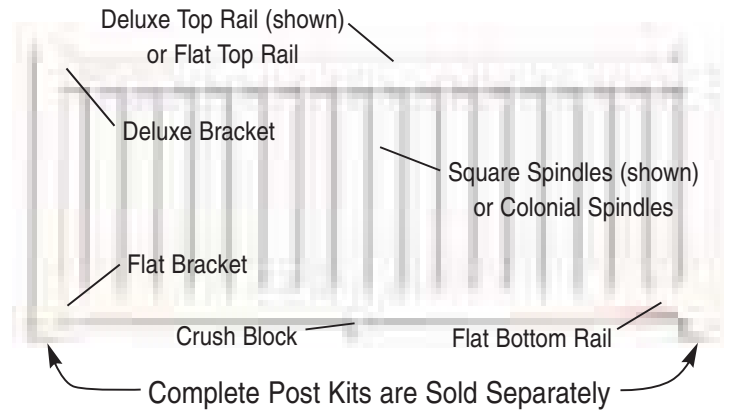
QuickRail™

1.800.294.1098

Synthetic Railing System

All Standard Kits Include:

- Top Rail
 - Bottom Rail
 - Spindles
 - Crush Block
 - Brackets
 - Screws
- Posts and other accessories sold separately.



7

STEP 7: Determine Type & Quantity of Posts Needed

Determine how many Posts you will need. These are not included in the prepackaged QuickRail™ Kits and must be purchased separately.

Complete Post Kit

Kit Includes:

- Post with structural post mount
- Hardware for wood and masonry applications
- Taper Cap
- Post Kit Base



| Outside Dimensions | Available Heights |
|--------------------|-------------------|
| 4" x 4" | 38", 44" |

Post Sleeve

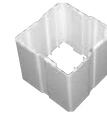
Use as a sleeve over existing structural support.

| Outside Dimensions | Inside Dimension | Available Heights |
|--------------------|------------------|----------------------------|
| 4" x 4" | 3 5/8" x 3 5/8" | 38", 44", 48", 60", 8', 9' |
| 5" x 5" | 4 5/8" x 4 5/8" | 38", 44", 8', 9' |



Post Wrap

Use a snap-together Post Wrap to surround existing posts.



| Outside Dimensions | Possible Inside Dimensions | Largest Square Post it will Surround | Largest Round Post it will Surround |
|--------------------|----------------------------|--------------------------------------|-------------------------------------|
| 4"x4"x10' | 3 1/4" - 4" | 4" | 4 1/2" |
| 6"x6"x10' | 5 1/8" - 6" | 6" | 6 1/2" |



Post Wrap Trim Kits

Use snap-together Trim Kits with Post Wraps.

QuickPost-LTF™

LIFETIME FINISH

| QuickPost-LTF | Actual Size | Height |
|---------------|-----------------|--------|
| 5" x 5" | 4 1/4" x 4 1/4" | 8'-8" |

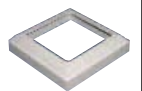
Porch Post

- Lifetime Finish - Never Needs Painting
- 5" x 5" x 8'-8" (actual size 4 1/4")
- Precise Colonial Detail
- Virtually Maintenance Free
- Mounting Plates & Screws Included
- Load Bearing Capacity: 2,500 lbs.
- Structural Metal Insert

- Can Be Trimmed
- Vibrant White Color - UV Protected
- Limited Lifetime Warranty

5" TRIM KIT for QuickPost-LTF sold separately

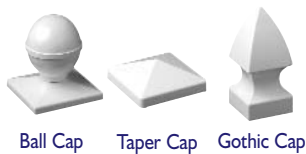
Kit Includes:
(2) Trim Pieces (top & bottom)



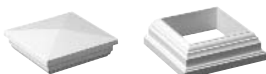
8

STEP 8: Choose Type & Quantity of Post Caps and Bases Needed

Caps and Bases are available in 4" and 5".



Ball Cap Taper Cap Gothic Cap



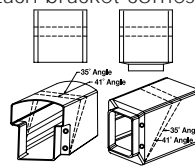
New England Cap New England Base

| | Actual Height |
|---------------------|---------------|
| 4" Ball | 4 5/8" |
| 5" Ball | 5 13/16" |
| 4" Taper | 1 1/8" |
| 5" Taper | 1 5/8" |
| 4" Gothic | 7 3/4" |
| 5" Gothic | 9 11/16" |
| 4" New England Cap | 1 11/16" |
| 5" New England Cap | 2 1/8" |
| 4" New England Base | 1 3/16" |
| 5" New England Base | 1 3/8" |

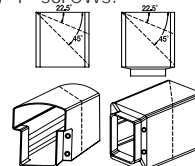
9

STEP 9: Choose Type & Quantity of Multi-Angle Brackets Needed

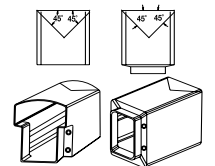
Multi-Angle Brackets are available in the Deluxe and Flat Styles. They can be used for 22.5° and 45° angle applications and also for extended stair slope applications that range from 35° - 41°. **These brackets must be trimmed in the field for the desired applications.** Each bracket comes with (4) 4" screws.



35° - 41° Stair Application



22.5° Angle Application 45° Angle Application



45° Corner Application

Note: It is necessary to have a 5" mounting surface when mounting a 45° bracket that is not a corner mount. (A 5" post sleeve can be used.)



Synthetic Railing System

STRAIGHT BRACKET KITS (white) for Deluxe Top Rail

Straight Bracket Kit Includes:

- (2) Deluxe Straight Brackets
- (2) Flat Straight Brackets
- (1) Screw Pack



- (2) Deluxe Straight Brackets (for Top Rail)

- (2) Flat Straight Brackets (for Bottom Rail)

STAIR BRACKET KITS (white) for Deluxe Top Rail

Accommodates stairs with a 30-34° angle of slope.

Stair Bracket Kit Includes:

- (1) Deluxe Sloped Upper Step Bracket
- (1) Deluxe Sloped Lower Step Bracket
- (2) Reversible Flat Sloped Brackets
- (1) Screw Pack



- (1) Deluxe Sloped Upper Bracket (for Top Rail)



- (1) Deluxe Sloped Lower Bracket (for Top Rail)



- (2) Reversible Flat Sloped Brackets (for Bottom Rail)

CURVED BRACKET KITS (white) for Deluxe Top Rail

Accommodates Round Columns

Curved Bracket Kit Includes:

- (2) Deluxe Curved Brackets
- (2) Flat curved Brackets
- (1) Screw Pack



- (2) Deluxe Curved Brackets (for Top Rail)



- (2) Flat Curved Brackets (for Bottom Rail)

MULTI-ANGLE BRACKET KITS (white) for Deluxe Top Rail

Multi-Angle Bracket Kit Includes:

- (1) Deluxe Multi-Angle Bracket
- (1) Flat Multi-Angle Bracket
- (8) Screws



- (1) Deluxe Multi-Angle Bracket (for Top Rail)



- (1) Flat Multi-Angle Bracket (for Bottom Rail)

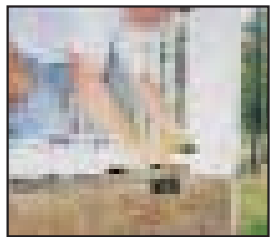
QUICKRAIL™ EASY INSTALLATION STEPS



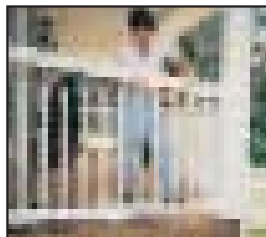
Step 1



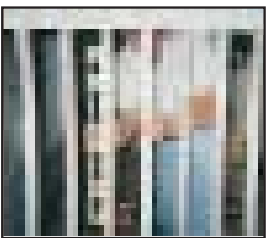
Step 2



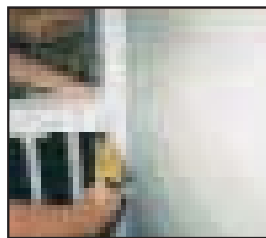
Step 5



Step 7



Step 8a



Step 8b

Step 1: Measure Opening

Step 2: Mark and Cut Bottom Rail to Length

Step 3: Mark and Cut Top Rail to Length

Step 4: Cut and Insert Crush Block

Step 5: Attach Bottom Rail with Mounting Brackets (pre-drill)

Step 6: Insert Spindles

Step 7: Place Top Rail over Spindles and attach with Mounting Brackets (pre-drill)

Step 8: Level Spindles and Insert Locking Screws (pre-drill)

Now Available

SYNTHETIC PORCH POSTS



Each Post Includes:
 (1) Post
 (2) Mounting Plates
 (8) Screws



MOUNTING PLATE

Pacific is pleased to introduce two NEW innovative synthetic porch posts: QuickPost-LTF (Lifetime Finish) and DuraPoly Post-(Paintable Finish). The crisp colonial detail and affordable pricing of our new posts is unparalleled in the industry.

The NEW QuickPost-LTF is available in a vibrant white vinyl finish that is UV protected and never needs to be painted. It perfectly complements our QuickRail™ – synthetic railing system. The

DuraPoly Post is a synthetic post that will never rot or decay and can be painted to match your project.

Our new posts are available in size 5" x 5" x 8'-8" (actual 4 1/4" width), have a structural metal insert (load capacity 2,500 lbs.) and have a limited lifetime warranty.

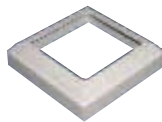
Each post includes (2) mounting plates and (8) screws. Trim Kits are available and sold separately.

QuickPost™-LTF

LIFETIME FINISH

5" TRIM KIT for QuickPost-LTF sold separately

Kit Includes:
 (2) Trim Pieces
 (top & bottom)



- Lifetime Finish - Never Needs Painting
- 5" x 5" x 8'-8" (actual size 4 1/4")
- Precise Colonial Detail
- Virtually Maintenance Free
- Mounting Plates & Screws Included
- Load Bearing Capacity: 2,500 lbs.

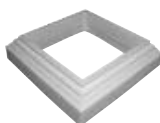
- Structural Metal Insert
- Can Be Trimmed
- Vibrant White Color - UV Protected
- Limited Lifetime Warranty
- Can Be Used With the QuickRail™ Synthetic Rail System
- Trim Kit Available (sold separately)

DuraPolyPOST

PAINTABLE FINISH

5" TRIM KIT for DuraPoly Post sold separately

Kit Includes:
 (2) Trim Pieces
 (top & bottom)
 (4) Screws



- Paintable Finish - Protect with Latex Paint
- 5" x 5" x 8'-8" (actual size 4 1/4")
- Precise Colonial Detail
- Virtually Maintenance Free
- Mounting Plates & Screws Included

- Load Bearing Capacity: 2,500 lbs.
- Structural Metal Insert
- Can Be Trimmed
- Limited Lifetime Warranty
- Trim Kit Available (sold separately)

1.800.294.1098