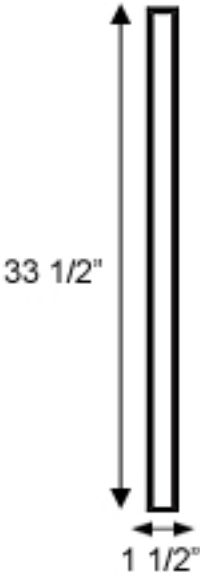
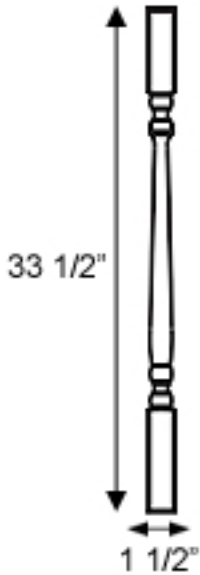
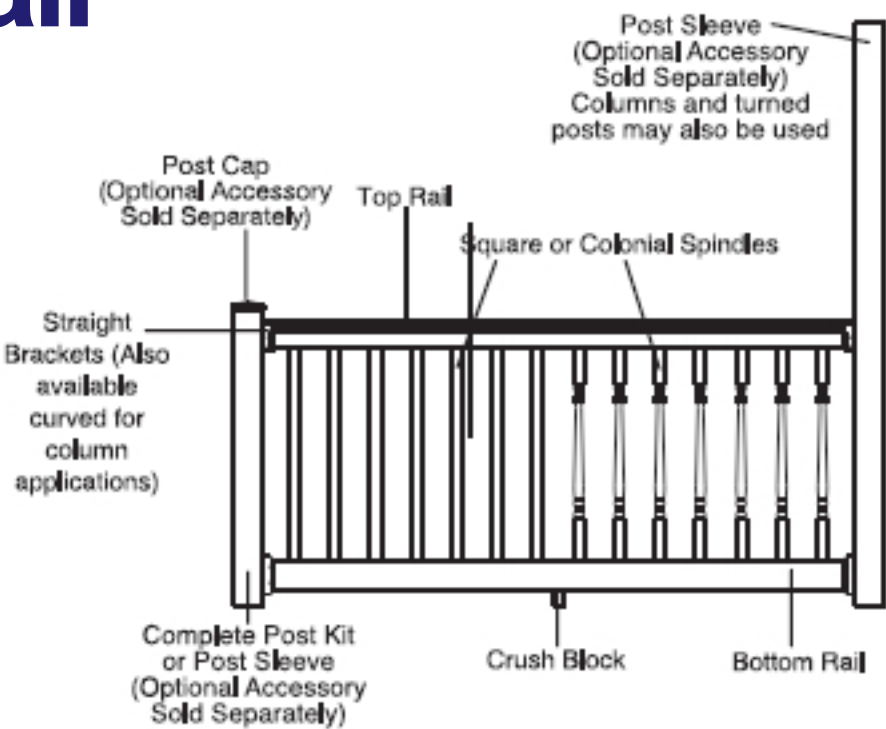
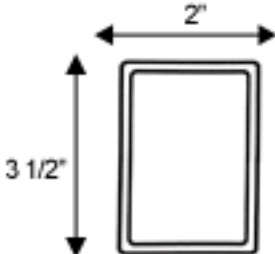
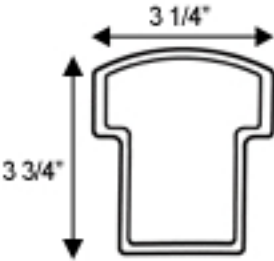
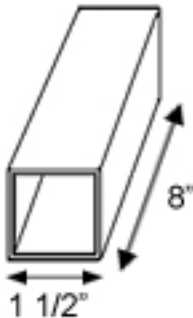


Endura Rail

Railing System



Available in
39 1/2"H

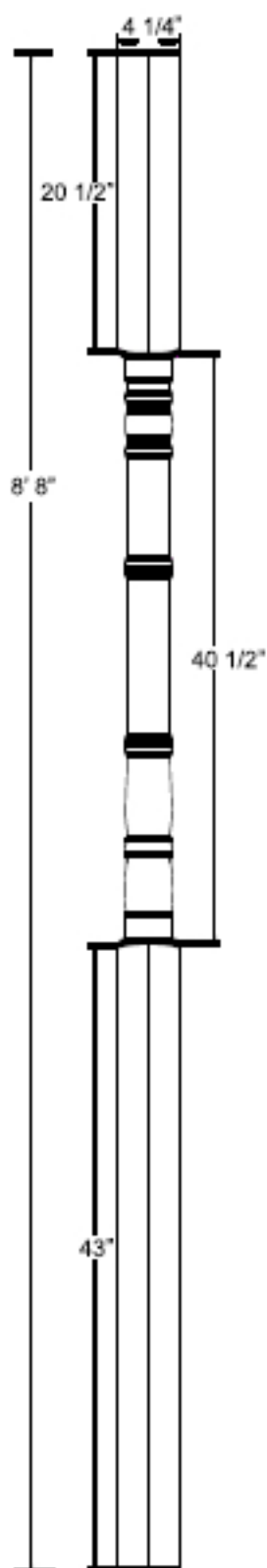


ACTUAL STRAIGHT RAIL LENGTHS

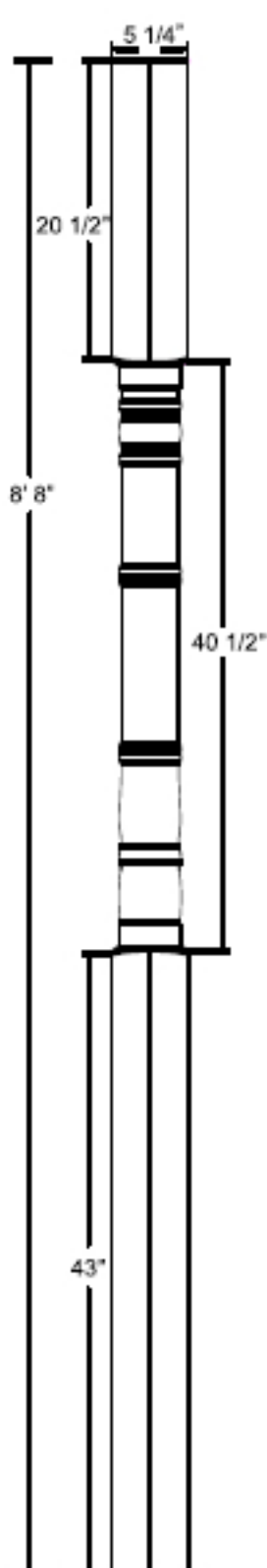
Nominal Rail Length	Spaced for Colonial Spindle (Actual Rail Length)	Spaced for Square Spindle (Actual Rail Length)
6'	70 1/2"	72"
8'	94 1/8"	96"
10'	117 3/4"	120"
12'	141"	144"

Custom lengths are available.
Call for special quoting on price and lead times.
Square Spindles are spaced 4" apart.
Colonial Spindles are spaced 3 1/8" apart.

5" Post



6" Post



PORCH POST

Post	Load Bearing Capacity (lbs.)	Weight (lbs.)
5" X 5" X 8'-8"	2,500	35
6" X 6" X 8'-8"	5,000	38

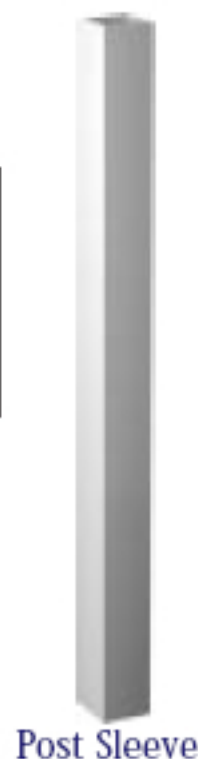
Includes (1) Post (2) Mounting Plates (8) Screws

Post Sleeve

Outside Dimensions	Inside Dimension	Available Heights
4" x 4"	3 5/8" x 3 5/8"	38", 44", 48", 60", 8', 9'
5" x 5"	4 5/8" x 4 5/8"	38", 44", 8', 9'

POST SLEEVES

Size	Inside Dim.	Sleeve Height	Units Per Box	Weight Per Post (lbs)
4" x 4"	3 5/8 sq.	38"	1	4.5
4" x 4"	3 5/8 sq.	44"	1	5.3
4" x 4"	3 5/8 sq.	48"	1	5.6
4" x 4"	3 5/8 sq.	60"	1	7.1
4" x 4"	3 5/8 sq.	8'	1	11.5
4" x 4"	3 5/8 sq.	9'	1	13
5" x 5"	4 5/8 sq.	38"	1	5.8
5" x 5"	4 5/8 sq.	44"	1	6.7
5" x 5"	4 5/8 sq.	8'	1	14.5
5" x 5"	4 5/8 sq.	9'	1	16.5



Post Sleeve

INDIVIDUAL COMPONENTS

Product	Units Per Box	Weight Per Piece (lbs.)
6' Deluxe Top Rail - Mortised for Colonial Spindles	4	6.3
6' Deluxe Top Rail - Mortised for Square Spindles	4	6.5
6' Flat Rail - Mortised for Colonial Spindles	4	4.8
6' Flat Rail - Mortised for Square Spindles	4	5
6' Deluxe Sloped Rail - Mortised for Colonial/Square Spindles	4	7
6' Flat Sloped Rail - Mortised for Colonial/Square Spindles	4	5.5
8' Deluxe Rail - Mortised for Colonial Spindles	4	9
8' Deluxe Rail - Mortised for Square Spindles	4	9
8' Flat Rail - Mortised for Colonial Spindles	4	6.5
8' Flat Rail - Mortised for Square Spindles	4	7
8' Deluxe Sloped Rail - Mortised for Colonial/Square Spindles	4	9.3
8' Flat Sloped Rail - Mortised for Colonial/Square Spindles	4	7.3
10' Deluxe Rail - Mortised for Colonial Spindles	4	10.6
10' Deluxe Rail - Mortised for Square Spindles	4	10.8
10' Flat Rail - Mortised for Colonial Spindles	4	8.2
10' Flat Rail - Mortised for Square Spindles	4	8.3
10' Deluxe Sloped Rail - Mortised for Colonial/Square Spindles	4	11.7
10' Flat Sloped Rail - Mortised for Colonial/Square Spindles	4	9.2
12' Deluxe Rail - Mortised for Colonial Spindles	4	12.7
12' Deluxe Rail - Mortised for Square Spindles	4	13
12' Flat Rail - Mortised for Colonial Spindles	4	9.8
12' Flat Rail - Mortised for Square Spindles	4	10
Colonial Spindle (1-1/2" x 1-1/2" x 33-1/2")	20	0.81
Square Spindle (1-1/2" x 1-1/2" x 33-1/2")	20	1
Square Spindle (1-1/2" x 1-1/2" x 39-1/2")	20	1.44
Screws (21 pack)	10	0.25
Crush Block (1-1/2" x 8")	10	0.25